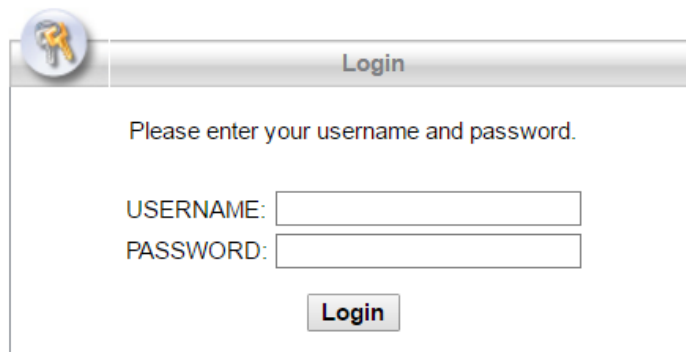


Connect to vpn or RDP to the Region of Southern Denmark

Purpose	To create a vpn connection with The Southern Region of Denmark(RSD) while located outside the Regional Lan-network and use of Remote Desktop(RDP) after successful vpn-connection
Responsible	Christian Olesen
Description	Download of the Cisco Anyconnect vpn Client How to log on to the vpn client How to log on to RDP
Information	For external users
Action	vpn

1. Use one of the following links:

<https://vpn.rsyd.dk>

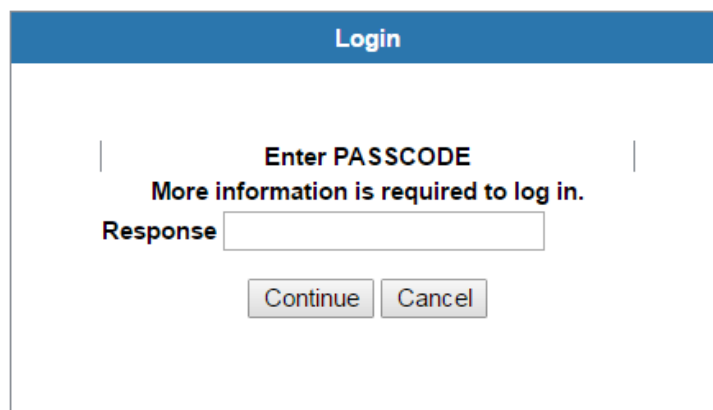


2. Logon with:

USERNAME: <Your username (EXT-xxx-yy)>

PASSWORD: <Your password>

3. You will receive a passcode via sms. Type it in the response field when it appears.



4. You are now connected to the Southern Region of Denmark via vpn.

From now on when you need to connect to RSD via vpn. You can open the client which is

Connect to vpn or RDP to the Region of Southern Denmark

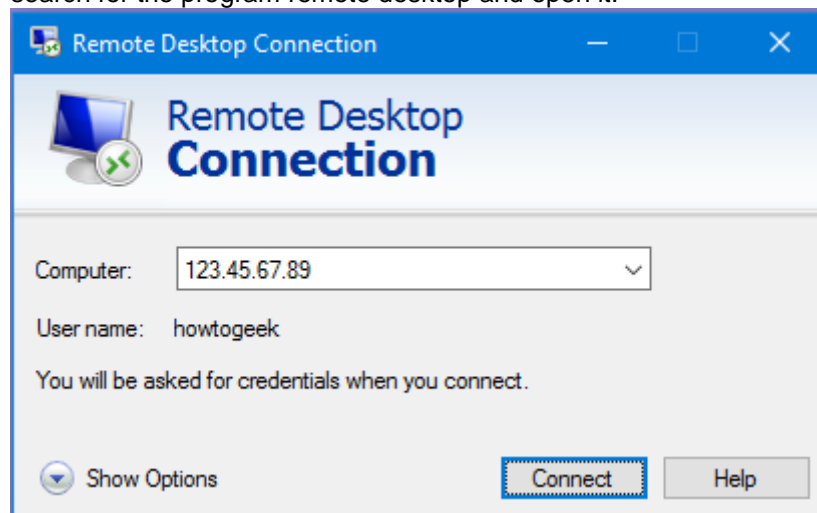
now installed local on your pc. In the connection-field it will say Region Syddanmark. Click connect and enter your credentials in the dialogbox. Click OK. A new dialogbox will appear prompting you for an answer. Type in the passcode which you will receive via sms after you've clicked OK in the credentialsbox.

RDP

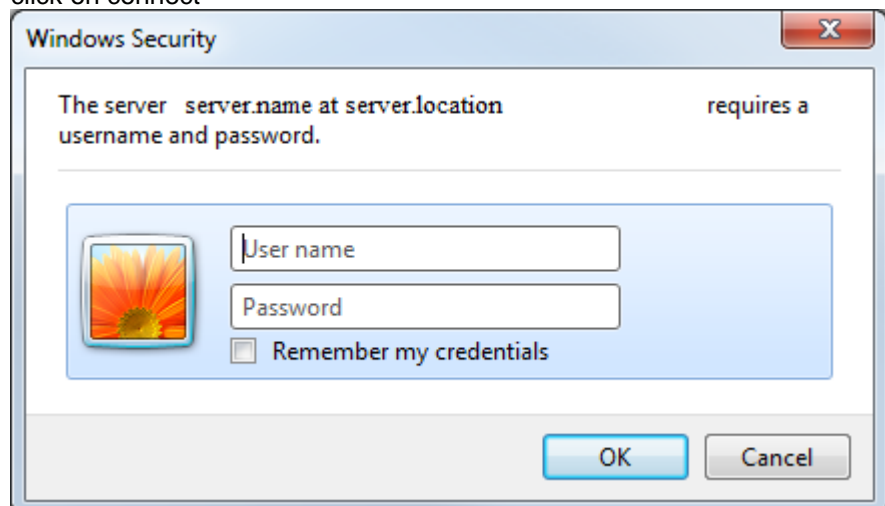
Use of remote desktop(RDP)

When the user is logged in via the vpn client the user can now connect to a server/pc. This is done with the tool Remote Desktop(RDP) or another tool if provided from your contact within our organization. The tool is built-in in windows.

1. search for the program remote desktop and open it.



2. type in the name of the desired target server. Example: [\\srvsbnprnxxv](#) or [\\Dxxxxxx](#) or Ip-address
3. click on connect



4. type in credentials and click OK. You will now have access.